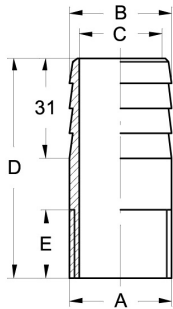
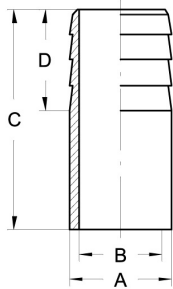
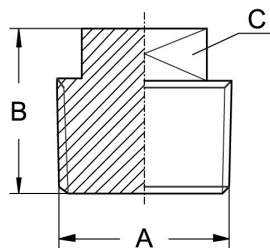


**Threaded fittings DIN EN 10241**
**Art.No**
**EUR**
**Art.No**
**EUR**
**Hose nozzle, thread, R**


DN	A	B	C	D	E	AISI316Ti	
8	R 1/4"	13,5	8,9	70	13		543829 <b>13,60</b>
10	R 3/8"	17,2	12,6	70	15		543830 <b>13,90</b>
15	R 1/2"	21,3	16,1	70	15		543831 <b>15,40</b>
20	R 3/4"	26,9	21,7	70	18		543832 <b>17,90</b>
25	R 1"	33,7	27,3	70	21		543833 <b>20,90</b>
32	R 1,25"	42,4	36	70	23		543834 <b>27,90</b>
40	R 1,5"	48,3	41,9	100	23		543835 <b>33,30</b>
50	R 2"	60,3	53,1	100	23		543836 <b>50,80</b>

**Hose nozzle for welding**


DN	A	B	C	D	AISI316Ti	
8	13,5	8,9	70	31		541929 <b>9,10</b>
10	17,2	12,6	70	31		541930 <b>9,60</b>
15	21,3	16,1	70	31		541931 <b>10,40</b>
20	26,9	21,7	70	31		541932 <b>12,20</b>
25	33,7	27,3	70	31		541933 <b>13,60</b>
32	42,4	36	70	31		541934 <b>18,10</b>
40	48,3	41,9	100	31		541935 <b>20,30</b>
50	60,3	53,1	100	31		541936 <b>31,40</b>

**Plug square, R**


DN	A	B	C	AISI316C-1.4408	
6	R 1/8"	19	SW 6		543928 <b>5,90</b>
8	R 1/4"	20	SW 9		543929 <b>6,60</b>
10	R 3/8"	22	SW 11		543930 <b>6,80</b>
15	R 1/2"	25	SW 13		543931 <b>7,30</b>
20	R 3/4"	27	SW 16		543932 <b>9,20</b>
25	R 1"	32	SW 20		543933 <b>15,40</b>
32	R 1,25"	35	SW 24		543934 <b>25,80</b>
40	R 1,5"	37	SW 25		543935 <b>28,90</b>
50	R 2"	38	SW 32		543936 <b>45,50</b>
65	R 2,5"	48	SW 42		543937 <b>112,20</b>
80	R 3"	52	SW 46		543938 <b>175,10</b>
100	R 4"	62	SW 58		543939 <b>Enquiry</b>

**Similar to DIN EN 10241**